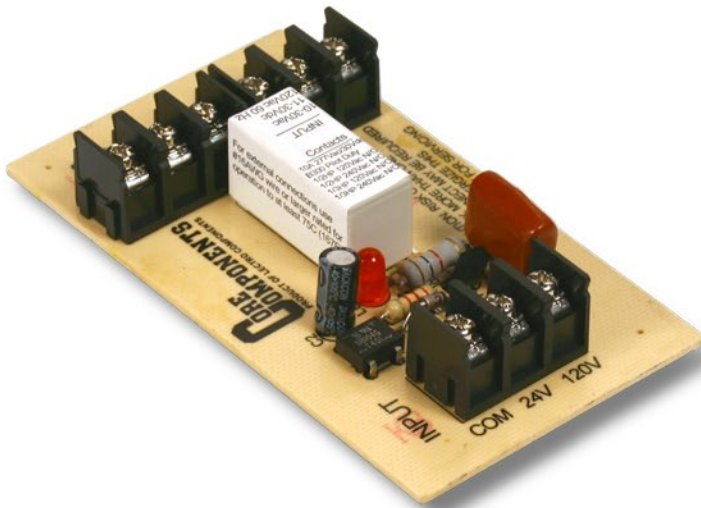


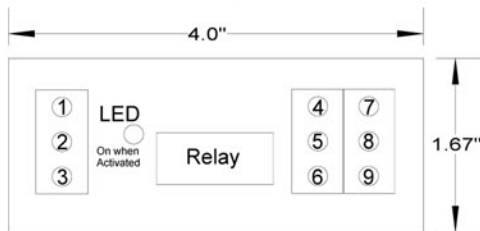
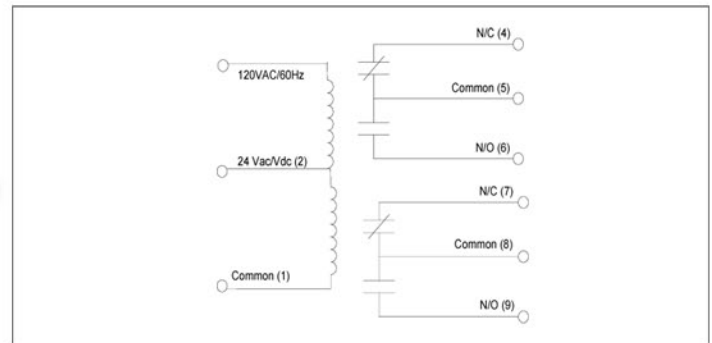
OPEN RELAY MODULE

LD41031

CVB12C-F



Track Mounted 10A Power Relay 11-30 Vdc / 10-30 Vac / 120 Vac 60 Hz



Connections & Indicators

SPECIFICATIONS

# Relays & Contact Style	One (1) DPDT
Expected Relay Life (Mechanical)	10 Million Operations Minimum
Operating Temperature	-40 to 150° F
Humidity	95% (Non-Condensing)
Status Indication	LED = Activated
Dimensions	4" x 1.67" x 2.75"
Mounting Style	Snap-Track®
Connections	8.5mm centers terminal block with wire hold-downs, universal screws
Approvals	UL 508, C-UL Canada Industrial Control Device,
Override controls	None
Dry Circuit Operation	Optional

Accessory Item: Mounting Track Section # ZZ73025

COIL CURRENT	
50 mA @ 10 Vac	40 mA @ 11 Vdc
60 mA @ 30 Vac	50 mA @ 24 Vdc
55 mA @ 125 Vac, 60 Hz	

COIL VOLTAGE INPUT
11-30 Vdc / 10-30 Vac / 120 Vac 60 Hz
DROP OUT = 6.5 Vac / 4.5 Vdc / 55 Vac
PULL IN = 10 Vac / 10 Vdc / 108 Vac

CONTACT RATING	
Either Contact Set	
10 Amps General Use	277/250 Vac
10A General Use	28 Vdc
1/2 hp (N/O)	120/208/240 Vac
1/3 hp (N/C)	120/208/240 Vac
Pilot Duty	B300



File # E202892
 Industrial Control Device UL508