

## Network Monitor Signal Tower



LED



4 Alarm Sounds

80db at 1m

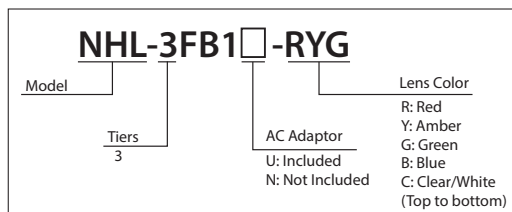
Ø60

Network

## Network Monitoring With a New Look

- Not dependent upon the OS.
- Supports common protocols such as HTTP, SMTP, SNMP and includes RSH.
- Easily works with NMS (network management/integration / monitoring) software, etc.
- Easily controllable by the SNMP SET command and RSH commands.
- Conforms to the CE requirements. (AC Adaptor does not carry the CE mark.)
- Four different alarm sounds can be correlated to match the prioritized monitoring level.
- Contains the ICMP protocol so PING monitoring can be set up for a maximum of 24 nodes.
- Using the IP Address of the NHL Tower, detailed setup functions can be accessed via a browser.

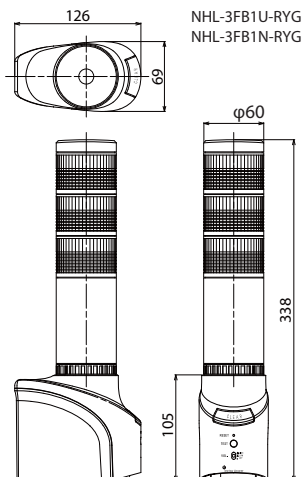
### How to Order



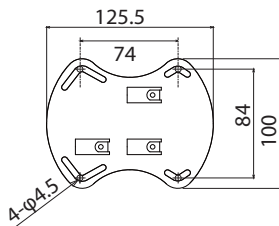
### Specifications

Model		NHL-3FB1U-RYG	NHL-3FB1N-RYG					
AC Adaptor	Rated Voltage	AC 100V to 240V	-					
	Operating Voltage Range	AC 90V to 264V	-					
Main Unit	Rated Voltage	DC 24V						
	Power Consumption	Unit	Red	Amber	Green	Blue	White	Buzzer
		2.0W	1.5W	1.5W	0.8W	0.8W	0.8W	2.0W
Operating Temperature Range		0°C - +40°C						
Storage Temperature Range		-10°C - +60°C						
Relative Humidity		RH of 20 to 80% (No Condensation)						
Vibration Resistance		19.6m/s <sup>2</sup>						
Protection Rating		IP20 (Not Waterproof)						
Alarm Sound	Audio Level	Three-position switch for "HIGH", "LOW", "OFF" "HIGH": 80dB or more "LOW": 70dB or less (Tested at 1m from diaphragm in upright position)						
	Tone Pattern	Four distinctive patterns: (Slow Intermittent), (Fast Intermittent), (Fast Burst), (Continuous)						
Switches	"CLEAR"	Pushbutton Switch						
	"TEST"	Pushbutton Switch						
	"RESET"	Pushbutton Switch						
	"BUZZER"	Slide Switch						
Communication Method	Ethernet	Physical Layer: 10BASE-T/100BASE-TX (Auto-negotiation/Full Duplex/ Half Duplex)						
		Data Link Layer: CSMA/CD						
		Network Link Layer: IP / ARP / ICMP						
		Transport Layer: TCP / UDP						
Application Layer: HTTP / RSH / SMTP / SNTP / POP / DNS / NTP / DHCP / Socket								
Mounting	Location	Indoors Only						
	Direction	Desktop or Wall-mount in the Upright Position						
Mass (AC Adaptor not included)		800g						
Accessories		AC Adaptor, Rubber Feet, Adhesive Tape, Support Base			Rubber Feet, Adhesive Tape, Support Base			

### Dimensions



Upright Base (Standard Item)



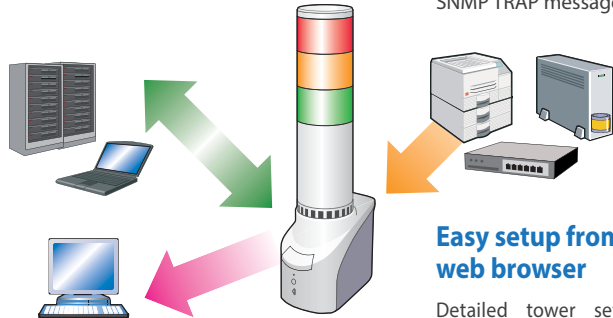
# Easy Integration for many system applications

## PING Device Monitor

### Monitors Device Existence on the Network

The NH Tower initiates PING interaction with network devices to verify existence of up to 24 nodes. When the response to a PING fails, a warning with light and sound occurs to alert administrators.

Among the 24 nodes, 12 nodes (13th - 24th) can be set up for more detailed monitoring parameters.



## SNMP v1-v2c

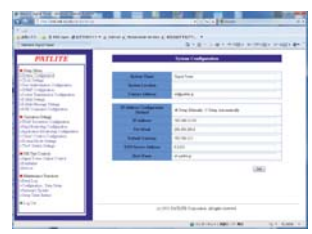
### Monitor networking equipment at a low cost

Many network devices (UPS, printers, routers, switches, etc.) generate SNMP TRAP messages when a failure occurs. The NHL tower can trigger a light and sound signal based on these SNMP TRAP messages to alert the administrator.

It can distinguish the various TRAPS. Register up to 16 groups (4 nodes per group).

### Easy setup from a web browser

Detailed tower setup is accessed from a web browser directly to its IP Address. Firmware can also be upgraded remotely.



Web Setup Screen

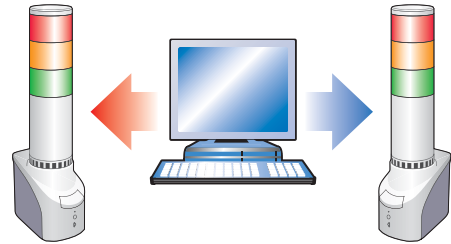
## Application Monitor

The tower can monitor important background applications and signal the administrator upon any failure.

# Communication Commands for many customized applications

## RSH

The RSH protocol is flexible with easily controllable commands. With the use of Network integrated management software; event information obtained from various monitoring tools etc., can be used as a trigger to cause a combination of flashing and alarm patterns to sound in synchronicity with the event.



## SOCKET Transmission

### PHN Command Compatibility

Controlled with 2 byte commands.  
 \* Compatible with NHE-3FB, NHC-3FB, NHM-3FB, and PHN-3FBE1.  
 \* Some functionality is limited.

**Event Occurrence:**  
**Command Tier to light, alarm to sound**  
 PHN Example Code: 0x57,0x17

### New PNS Command Compatibility

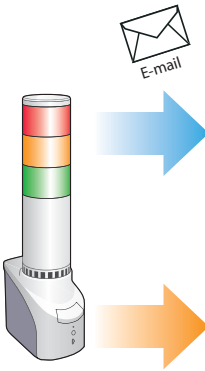
The PNS command can be used to control all pattern information.  
 \* The PNS command is a unique command from PATLITE.

**Event Occurrence: Command Tier to light, alarm to sound.**  
 RSH Example Code: rsh 192.168.10.1 -l root alert 111001

**Event Occurrence: Command Tier to sound alarm**  
 PNS Example Code: 0x58,0x58,0x53,0x00,0x00,0x06,0x01,0x01,0x01,0x00,0x00,0x01

# Diagnostic / Reporting / Notification Features

## E-mail Transmission



### Send e-mail with a maximum of eight selectable events

Up to eight events can be created and sent as a secure e-mail with the subject name and text corresponding to the event.

## SNMP v2c

**SNMP TRAP Transmission**  
 Can transmit from a maximum of eight network devices.

## Self-diagnosis



The test switch on the front of the Body can check the Signal Tower and alarm operation functions easily without it being controlled through the network.

## Options

