

# KP-A

## Revolving Warning Light



-  **Bulb**
- IP23**
- Ø162**

## Corrosion-proof plastic Revolving Warning Light for a wide range of applications.

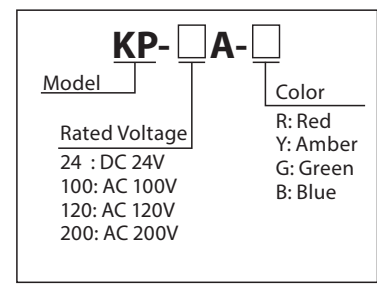
### FEATURES

- Extended product lifespan by using vibration-resistance and reliable operation, even under a severely cold environment (-30°C).
- Indoors allows upright, inverted, and sideways installation; outdoors allows upright installation only.
- Has the CE mark and conforms to the requirements (for 24V type only) for the EC directive.
- Dome lens is made of superior weather-resistant and light-translucent acrylic resin.
- Mounting Bolts are drip-proof and made of rust-free stainless steel.
- Rotating parabolic reflector to enhance visibility from a distance.
- Main Body is made of special UV and water-resistant resin.
- Available Colors are Red, Amber, Green, and Blue.

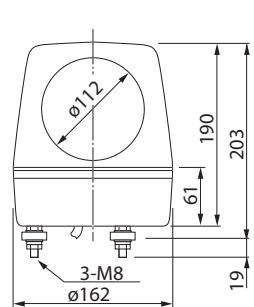
### Specifications

Model	Rated Voltage	Current Consumption	Flash Rate (fpm)	Bulb		Mass
				Ratings	Repl. No.	
KP-24A	24V DC	1.2A	140	24V 35W	2	1.0kg
KP-100A	100V AC	0.3A		120V 40W	6	
KP-120A	120V AC	0.4A	120	220V 30W	37	1.2kg
KP-200A	200V AC	0.13A				

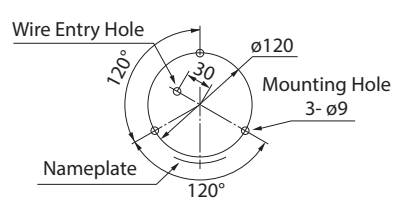
### How to Order



### Dimensions



### Mounting Dimensions



(Unit: mm)